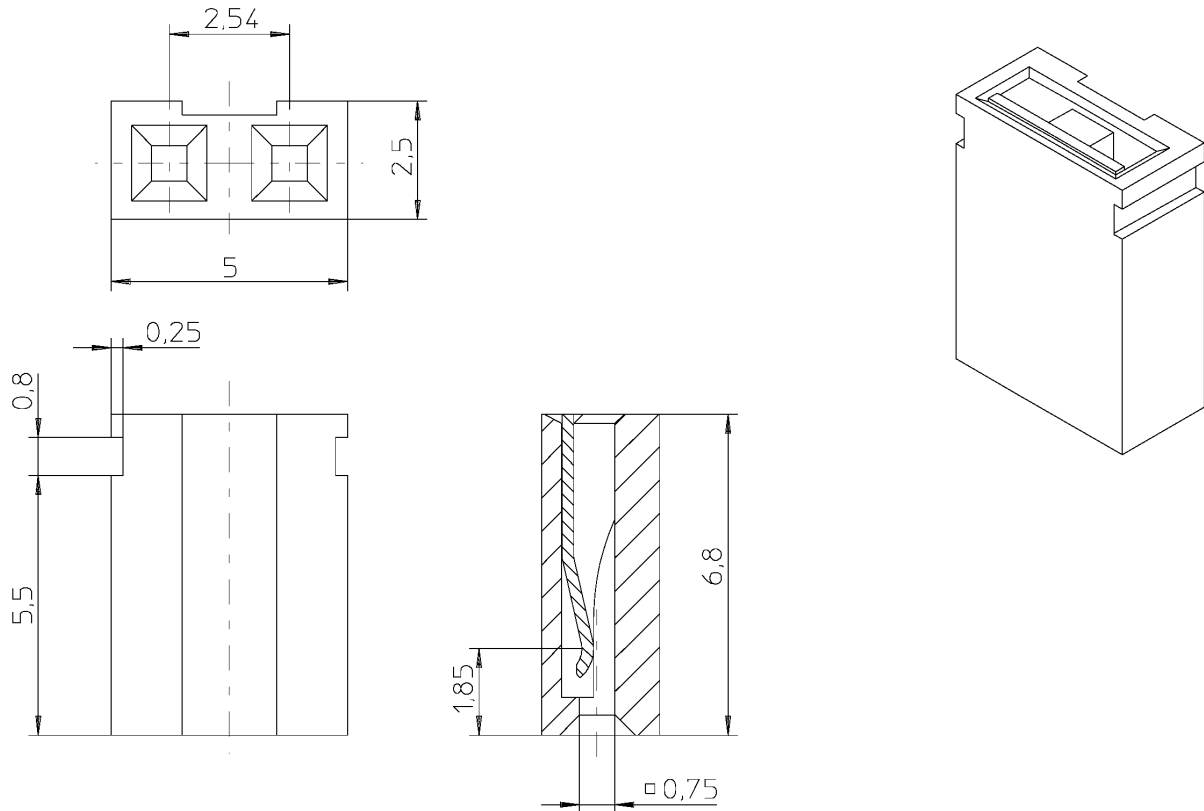


## JUMPERS TYPE PL1U



- Female connector mating with  $0.6 \pm 0.04$  mm, square or round pins
- Used in most male headers and connectors
- Open top enables stacking of two or more Jumpers on the same pin and allows inspection of contacts and testing with a probe
- Available in different colours

### Applications

- Bridging during testing
- Programming or choosing alternative operating modes
- Identification coding of apparatus
- Can be used as switches instead of DIL switches

## TECHNICAL SPECIFICATIONS

|               |                        |  |
|---------------|------------------------|--|
| MATERIALS     | Connector body         | Glass fiber filled polyester                                     |
|               | Contact                | Phosphor bronze  |
|               | Contact plating        | Gold over nickel or Gold flash over nickel palladium over nickel |
| ELECTRIC DATA | Current rating         | 2 A at 80 °C   |
|               | Proof voltage          | 750 V (rms) 50 Hz  |
|               | Insulation resistance  | ≥ 10 <sup>6</sup> MΩ   |
|               | Contact resistance     | ≤ 15 mΩ  |
| PHYSICAL DATA | Temperature range      | -55 °C...+125 °C   |
|               | Insertion force        | ≤ 4 N  |
|               | Withdrawal force       | ≥ 1 N  |
|               | Mechanical endurance   | 200 insertions (min)   |
|               | Recommended mating pin |  |
|               | - size                 | 0.6 ± 0.04 mm, square or round                                   |
|               | - length               | 6 mm   |
| Flammability  | UL 94 V-O              |  |

## ORDERING CODE

**PL1U** – **0,8** – **1**

|             |                               |      |
|-------------|-------------------------------|------|
| <b>PL1U</b> | TYPE OF CONNECTOR             |      |
|             | Two-part Jumper               | PL1U |
| <b>0,8</b>  | CONTACT FINISH                |      |
|             | 0.2 µm hard gold over 2 µm Ni | 0,2  |
|             | 0.4 µm hard gold over 2 µm Ni | 0,4  |
|             | 0.8 µm hard gold over 2 µm Ni | 0,8  |
|             | Other platings on request     | ...  |
| <b>1</b>    | COLOUR CODE                   |      |
|             | Grey (standard)               | 1    |
|             | Green                         | 2    |
|             | Red                           | 5    |
|             | Black                         | 7    |
|             | Other colours on request      | ...  |