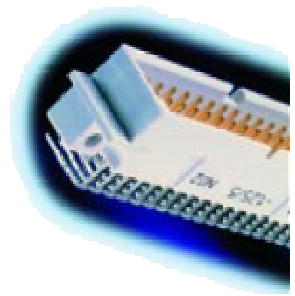
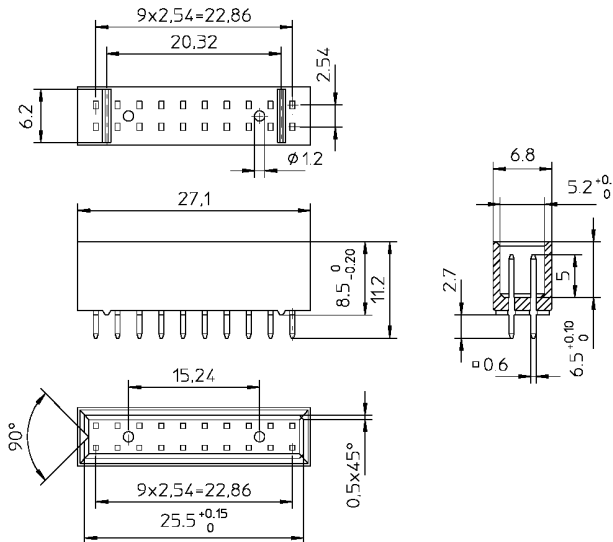


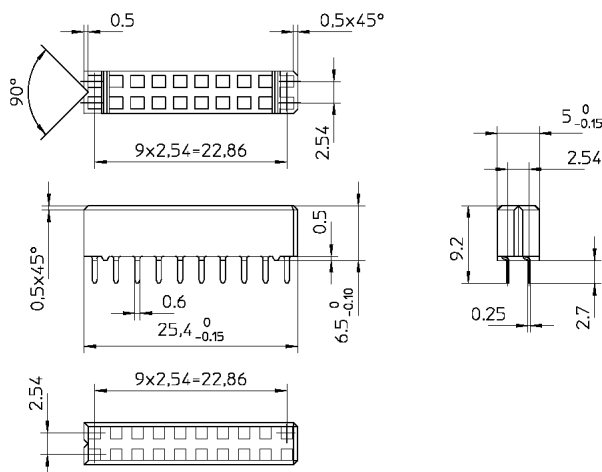
## LOW PROFILE MODULAR CONNECTOR FOR PRINTED BOARDS



### MALE



### FEMALE



## TYPE PLP

### MATERIALS

Connector body	Glass fiber filled polyester
Female contact	Phosphor bronze, CuSn6
Male contact	Copper alloy
Contact plating	Nickel all over + cobalt hard gold MIL-G-45204 B (0.8 µm or 2.5 µm) Type II (99.0 % gold minimum) Grade C (Knoop hardness 130-200)
Termination plating	5µm Sn over nickel

### ELECTRIC DATA

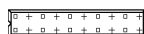
Current carrying capacity	1.5 A at 20 °C 1 A at 80 °C 0.75 A at 100 °C
Proof voltage	Contact/contact 1000 V (rms)
Insulation resistance	≥ 10 <sup>6</sup> MΩ
Contact resistance	≤ 20 mΩ

### PHYSICAL DATA

Temperature range	-55 °C...+125 °C
Flammability	UL 94 V-O
Insertion force	≤ 1 N/contact
Retention force	≥ 0.15 N/contact pair

## ORDERING CODE

### FEMALE

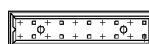


PLP010FS-C1D-0,8/5\*



PLP020FS-C1D-0,8/5\*

### MALE



PLP010MS-C1D-0,8/5\*-P\*\*



PLP020MS-C1D-0,8/5\*-P\*\*

\*Plating

Standard platings 0,8/5 and 2,5/5

\*\*(-P) Polarized form